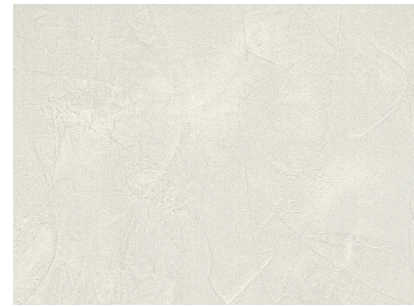


PYM.JESSICA BLANCO

FORMAT	20x60
THICKNESS	9.500
PRODUCT	
TYPE	GL Esmaltado
GROUP	BIII

APPLICABLE STANDARD EN 14411 ANNEX G



TESTS		RESULTS	
	UNE-EN ISO 10545-2 DIMENSIONAL FEATURES	COMPLIES WITH THE STANDARD	
	UNE-EN ISO 10545-3 WATER ABSORPTION	16%	
	UNE-EN ISO 10545-4 MODULUS OF RUPTURE	BREAKING STRENGTH	>600 N
		BENDING STRENGTH	>12 N/mm ²
	UNE-EN ISO 10545-8 LINEAR THERMAL EXPANSION	<7,0 x 10 ⁻⁶ °C ⁻¹	
	UNE-EN ISO 10545-9 THERMAL SHOCK RESISTANCE	RESISTS	
	UNE-EN ISO 10545-11 CRAZING RESISTANCE	RESISTS	
	UNE-EN ISO 10545-13 CHEMICAL RESISTANCE	AMMONIUM CHLORIDE 100 G/L	A
		SODIUM HYPOCHLORITE 20 MG/L	A
		HYDROCHLORIC ACID 3%	COMPLIES WITH THE STANDARD
		CITRIC ACID 100 G/L	COMPLIES WITH THE STANDARD
		POTASSIUM HYDROXYDE 30 G/L	COMPLIES WITH THE STANDARD
	UNE-EN ISO 10545-14 STAIN RESISTANCE	GREEN AGENT IN LIGHT OIL	5
		IODINE SOLUTION IN ALCOHOL	5
		OLIVE OIL	5